

Metadata and Caption Management Omneon ProXplore and Starfish Technologies



With the continued adoption of file-based video workflows, more and more information is becoming available as data. This includes captioning and subtitling. Formerly a linear medium, video captioning as digital non-linear text data has opened up a broad range of new capabilities and workflows—from conforming edited captioned material, to on-the-fly selection of alternate language captions. The use of captioning text in conjunction with metadata is a natural extension of these capabilities. The Omneon ProXplore clip and metadata management application gathers and maintains metadata of many types from many sources—captioning information among them. Starfish Technologies, a leader in the field of file based caption data manipulation, has integrated with the Omneon Media Application Server to provide caption data as metadata to facilitate searches, provide additional insight into content, and maximize the productivity of organizations working with digital video.

The Power of Metadata

ProXplore combines metadata management with a powerful rules engine for workflow optimization. When the two are used together, ProXplore has the ability to redirect or change the availability of content among users and applications to progress the workflow while still allowing for the creative processes inherent in video production. For example, content ingested from a camera could be presented to a QC application for review and the results of this test can be used to drive subsequent activities.

Caption Content Driving Workflow

Now imagine what can be done when caption information is added to the mix. Incoming video is sent to Starfish for processing, where the caption information is extracted and sent back to ProXplore as an independent track. Multiple caption tracks can be stored per clip and the desired captions can be selected depending on the situation. The caption tracks are also segmented and linked to scenes in the source clips, making each phrase of caption content and its accompanying video searchable. Follow-on functions can be based on the caption content as well. Editors can be notified that video has arrived with certain words or phrases, or content can be directed to particular streaming URLs based on text content.

About ProXplore

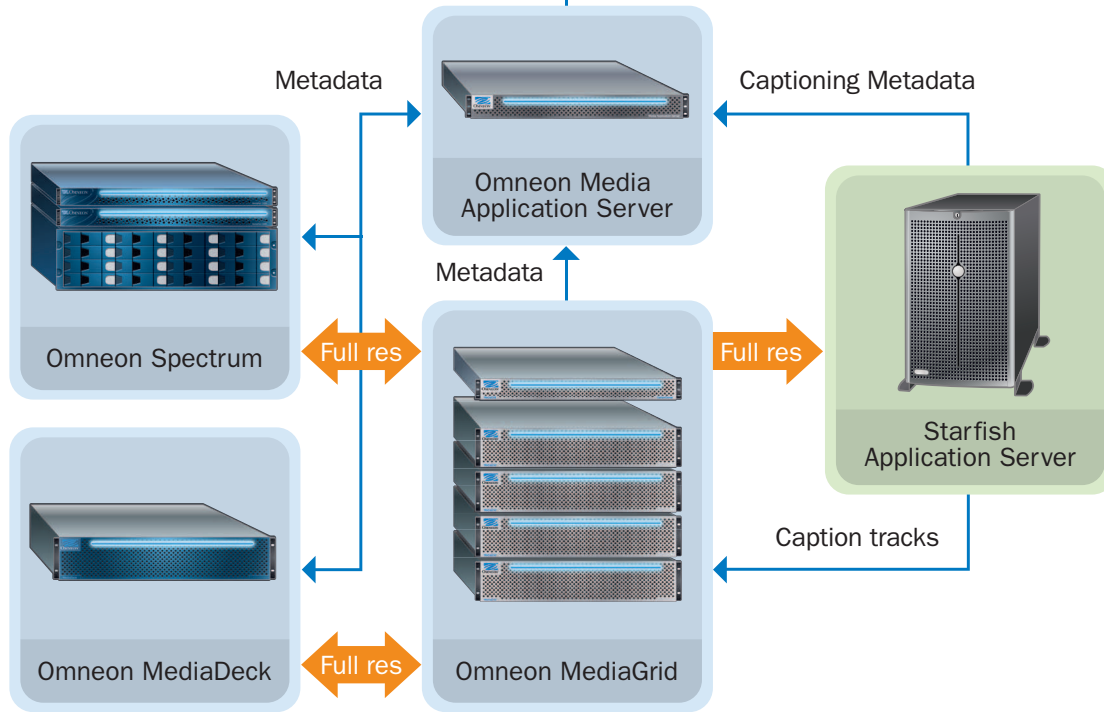
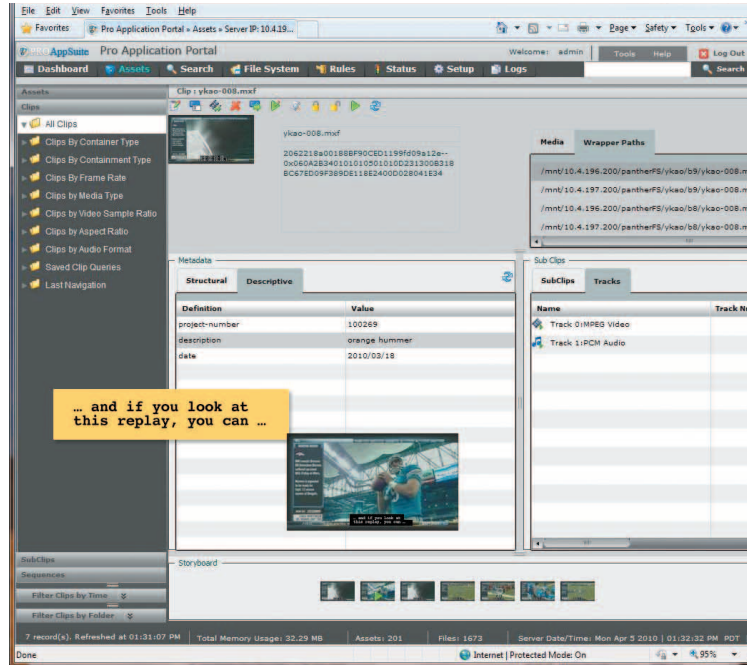
Besides being a powerful web-based GUI for clip and metadata management, ProXplore provides a flexible and extensible environment into which 3rd party developers can add functionality without having to build an entire media management or metadata system. In this case, Starfish has done just that. With Starfish connected to ProXplore, the Caption Rules option becomes available to selectively route media clips to the Starfish application server. ProXplore then provides extensive search and filter capabilities which use caption metadata to find content down to the individual frame.

SOLUTION OVERVIEW

- Automatically harvest metadata from caption material
- Manage and select from multiple caption tracks per clip
- Search for content across multiple file systems using words or phrases from caption text
- Caption content linked to full clips, sub clips, or individual frames
- Trigger workflow from caption content

Find More Online

www.omneon.com/solutions



The harvesting of captions as metadata can be completely automated and triggered by the rules engine built into ProXplore. Here, ProXplore displays the captions associated with a subclip by hovering over the subclip thumbnail with the cursor.



U.S. Headquarters:
 1237 E. Arques Ave.
 Sunnyvale, CA 94085
 ph +1 866.861.5690
 ph +1 408.585.5000
 fx +1 408.585.5099

Europe:
 5 Lindenwood
 Chineham, Basingstoke
 RG24 8QY United Kingdom
 ph +44 1256.347.400
 fx +44 1256.347.410

Japan:
 Ginza 3-Chome Bldg. 8F
 3-14-1 Ginza, Chuo-ku
 Tokyo 104-0061 Japan
 ph +81 03.5565.6735
 fx +81 03.5565.6736

Asia/Pacific:
 20 Loyang Crescent
 Singapore 508984
 ph +65 6548.0500
 fx +65 6548.0504